

COMPANY PRESENTATION



QUINCE M PRO

CHALLENGING THE
STATUS QUO!

BELGRADE, SERBIA



VIŠNJIĆEVA 8/5,
11000 BELGRADE, SERBIA

+ 381 62 608892

OFFICE@QMP.RS



COMPANY PROFILE

QUINCE M PRO

Location Belgrade, Serbia

Founded: 2015

CEO: MSc Vladan Miladinović

Total employees: 10

FIELD OF WORK:

- Project design in the field of hydrogeology,
- Geothermal systems
- Systems for multi-purpose use of groundwater
- Engineering and consulting in:
 - The field of hydrogeology,
 - Environmental protection,
 - Irrigation systems,
 - Professional supervision

WHO WE ARE



ABOUT THE COMPANY

We are a company that focuses on the design, engineering and consulting in the field of geology, hydrogeology, geothermal energy, environmental protection and related scientific and professional fields.

The backbone of the company makes a small team of design engineers with strong expertise and significant experience. One of the external QMP partners is Faculty of Mining and Geology, Department of Hydrogeology in way of joint support in project designs, field investigations, scientific studies, as well as services in the course of a single operation.

WHERE ARE WE GOING?



VISION

By implementing the set guidelines, the company "Quince M Pro" d.o.o. is determined to be the leader in the field of hydrogeological, hydrogeothermal and petrogeothermal research in terms of the quality of its services. It achieves its vision of business by constantly expanding the scope of business, increasing the number of employees, increasing the quality of services and overall strengthening of its position on the market.



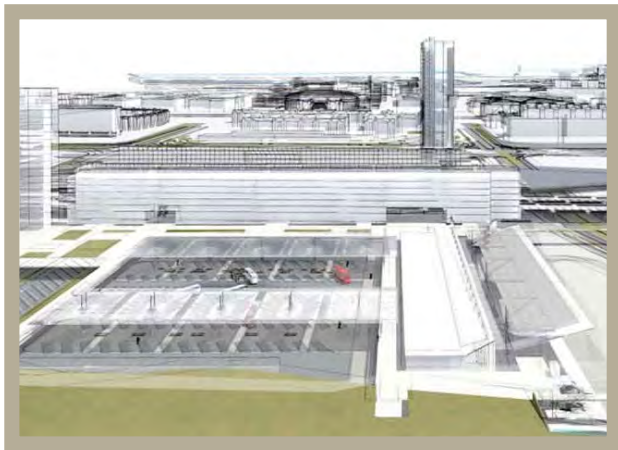
MISSION

Quality policy is part of the overall business policy of „Quince M Pro“ d.o.o. which constantly improves the quality of services and meets the needs of users and staff.



SUCCESS STORY

Et eatem ex et ere sunt adipitis audant lique ad ut officiisquia vollit quo temodi quam Soluptis reicitium qui utem esequiati omnist vitia dolupta tianiam qui re ipsam aces alique magnate volluptat aspe volore ma quis etur? Et estotaqui imoluptatia niendis etur resequunt additionally Incit quam offici dolor simos rem inihici entiatur genet si omnimol orrumquias si deni deliqui denimpo samusUt ommodis expeleces magniendit utem num vent volupta temolenemo tet quo et eium ende doluption



NEW BUS STATION

NOVA AUTOBUSKA STANICA BLOK 42 NOVI BEOGRAD

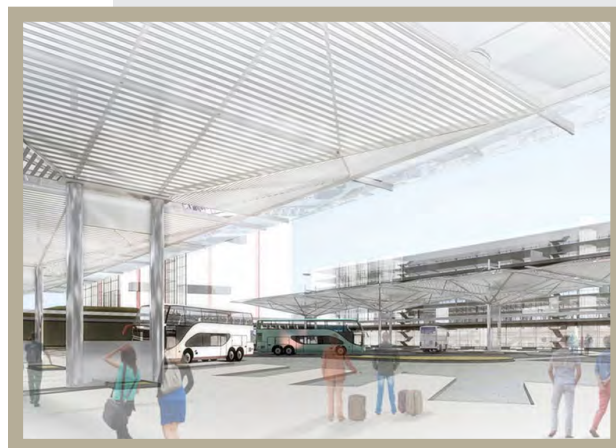
NAZIV INVESTITORA:	BAS AD
TIP OBJEKTA:	NOVA AUTOBUSKA STANICA
LOKACIJA:	BEOGRAD
GODINA:	2019 - 2022
INSTALISANI KAPACITET:	OKO 2 MW
IZVRŠENE USLUGE:	<p>PROJEKTOVANJE: Geološka istraživanja, Opremanje i povezivanje bunara</p> <p>IZVOĐENJE: Izrada, opremanje i povezivanje bunara</p> <p>DOZVOLE: Pribavljanje eksploatacionog prava – u toku</p>

NEW BUS STATION BELGRADE

Za potrebe grejanja/hlađenja objekata nove autobuske stanice na Novom Beogradu u Bloku 42 koristiće se subhidrogeotermalni resursi.

U periodu od 2019. do 2022. godine izvedeno je 6 istražno-eksploataciono-upojnih bunara, sa dvojnjom funkcijom, a sve u cilju postizanja efekta "Aquifer thermal energy storage (ATES)".

Bunari su izbušeni rotacionom metodom bušenja, uz reversnu cirkulaciju fluida za bušenje, do dubine od 40 m.



JOVAN JOVANOVIĆ
DIREKTOR

Adelecaborem facerum
ad modi blaborum rerore
expeligenis ad ulpa quae is
moluptaero con re dolut occus
volupta comnis et lab id quam
qui delest eaquos repudae...

